



**ALPINA**

# LAMINAR FLOW CABINET

MODEL **PCR700**



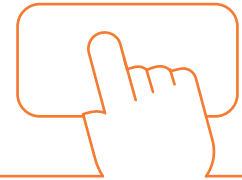
## Cabinets PCR series

WHAT MAKE **US STAND** OUT?**SILENT WORK**

Comfortable work is ensured by the silent-running electronically controlled fans EC type and unique system of air flow inside the working space.

**USER FRIENDLY TOUCH PANEL**

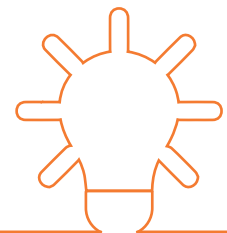
For increase the comfort of work each of the function is actuated by dedicated button whereas menu is available in many languages including Polish, English, German, Spanish, Italian, French, Turkish. Thanks to intuitive pictograms and clear remarks the cabinet is easy to maintain even in gloves and is the basis of system "Easytouch".

**LOW ENERGY CONSUMPTION**

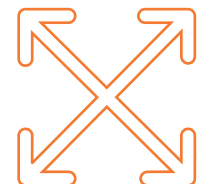
The use of high-tech EC fans and energy-efficient lighting reduces power consumption by as much as 76% in operating mode. The power consumption of the PCR1000 chamber during operation without lighting is only 28 watts, while that of the PCR1300 model is 33 watts, one of the best in the industry.

**3 UV LAMPS 15 WATTS**

Installed germicidal lamps with a power of 15 watts guarantee disinfection of the interior of the chamber providing sterile conditions for work. The chambers are also equipped with a UV lamp timer.

**CHAMBER SIZES FROM 70, UP TO 160 CM**

PCR series chambers are produced as standard in widths from 70 to 160 cm (model PCR1600). At the request of the customer, we can make any modifications, not only in terms of dimensions, but also functionality - according to the sent guidelines.

**FILTR HEPA 99,995% FOR MPPS**

Installed top-quality HEPA filters, are checked in our research laboratory, guarantee adequate air purity and working environment. The laminar flow cabinet has a HEPA filter working monitoring system that allows you to control its effectiveness.





# LAMINAR FLOW CABINET WITH VERTICAL AIRFLOW

## PCR700

## Product characteristics

---

- The chambers **create sterile conditions** for the material being processed. It is recommended for working with samples, that do not pose a microbiological threat. They **guarantee product protection**; they do not guarantee protection of the operator.
- The PCR chamber has **3 germicidal UV lamps**, including two with flow sterilization capability air during operation.
- **Adjustable, vertical laminar airflow** from 0,25 to 0,50
- Dual filtration system: **preliminary polyamide EU3 (G3) filter** and **HEPA H14** with efficiency above 99,995% for MPPS.
- **Automatic HEPA compensation** provides stable and safe volume of the airflow inside the working space.
- **Silent working fans**, CA level according to PN-EN ISO 11201 below 55 dB.
- **Airflow velocity control** using sensor.
- **Permanently fixed UV lamp** in the upper part of the working space, protected from accidental switching on during operation.
- **Digital work timer** of device & UV lamp.
- **Cost-effective, LED illumination** placed inside the working space.
- Stainless steel work surface, countertop total as standard.
- Countertop chamber, does not require dedicated base.
- **User-friendly and easy 7" inch touch display „EASYTOUCH"** - operated by dedicated buttons with several languages: Polish, English, German, Spanish, French, Italian, Turkish.
- An electrical outlet on the chamber housing.
- Optional base on lockable wheels.

## Optional equipment (additional fee)

---

- › Base (table) on lockable wheels.
- › Valves: vacuum, gas, water, air
- › Additional sockets in the working space
- › Stainless steel rods for hanging accessories
- › Passage for cables, additional opening



Dedicated table with stainless steel top

## Attest & warranty

---

Attests of products:

- › CE declaration
- › Cabinet is produced according to the quality management system ISO 9001

Each cabinet is tested in the factory's laboratory maintained according to norm ISO 17025.

Warranty of biological safety cabinet: **24 months**

## Technical data

Outside dimensions <i>wid. / dep. / heig.</i>	mm	719 / 500 / 780	
Inside dimensions <i>wid. / dep. / heig.</i>	mm	688 / 490 / 500	
Number of fans	pcs	1	
Adjustable airflow	m/s	0,25 - 0,50	
Number of filters	pcs	prefilter	1
		HEPA main	1
Effectiveness of HEPA	dB	> 99,995 % for MPPS - H14	
Sound pressure level PN-EN ISO 11201	dB	< 49	
Light intensity	lux	> 1000	
Power consumption	Wat	work mode with light	33
		work mode without light	19
		nominal power	201
Number of UV lamp	pcs	3	
Power of UV lamp	Wat	15	
Number of electrical sockets on the cabinet casing	pcs	1	
Control panel with touch display	-	lang.: PL, EN, DE, FR, IT, ES, TR, EL, UK	
Gas, vacuum and air valve <i>option</i>	-	mechanical, with connection 3/8"	
Cabinet construction	-	cabinet construction worktop	stainless steel 1.4301
		outside casing	safety glass, th. 6 mm steel DC01, powder coated RAL 7045
		front protective cover	polycarbonate
Weight of device	kg	55	
Power supply 1-phase	V	230 V / 50 Hz	

Each chamber has an individual test protocol for filter integrity, air velocity and particle content. The test is performed with a photometer, anemometer and laser particle counter.